



M-13 Revision 93

Kevin Hatch
Sr. Manager Dispatch, System Operations
Markets and Reliability Committee
June 27, 2024

- Section 1.3 Communications
- Updated from WSE observation
 - Effective communications are critical to ensure reliability during emergency operations. PJM conducts regular conference calls with System Operations Subcommittee representatives (TOs) as well as neighboring RCs BAs and TOPs during emergency operations. Attachment B defines Teleconference Protocol Guidelines. **Any operational decisions made on these calls or otherwise outside of normal control room operations shall be followed with a call between control rooms to confirm understanding of the decision by all parties.**

- Section 3.2 Conservative Operations & 3.4 Hot Weather Alert
- Updated language from EGSTF
- Member Actions
 - Effective March 1 through November 30, between the hours of 15:00 Eastern Prevailing Time and 24:00 Eastern Prevailing Time, Generation dispatcher of natural gas fired resources will update Markets Gateway to indicate that gas supply either (1) has been procured or (2) is expected to be available, to meet their day ahead energy and/or reserve commitment for the next operating day.

- Section 3.3.2 Cold Weather Alert
- Updated language from EGSTF
- Member Actions
- **Effective December 1 through the last day of February, between the hours of 15:00 Eastern Prevailing Time and 24:00 Eastern Prevailing Time, Generation Dispatcher of natural gas fired resources will update Markets Gateway to indicate that gas supply either (1) has been procured or (2) is expected to be available, to meet their day ahead energy and/or reserve commitment for the next operating day.**

- 3.3.1 Cold Weather Advisory
- Added step based on WSE recommendation

Prepare to take freeze protection actions such as erecting temporary windbreaks or shelters, positioning heaters, verifying heat trace systems, or draining equipment prone to freezing.

- Test and validate that freeze protection systems are functional and ready to operate to protect plant equipment that is prone to freezing.

- 3.8.2 GMD Action
- Added a PJM Action to cross reference GMD Actions & PJM Conservative Operations in section 3.2
 - If generation re-dispatch or other controlling actions are required to control the system to GMD prescribed limits or to respond to equipment that has come out of service due to GIC, PJM Dispatch may issue Conservative Operations as outlined in Section 3.2 of this manual

- Section 5.7 Load Shed Directive Procedure
- Updated to align with recent PAI trigger changes

5.7 Load Shed Directive Procedure

Load Shed Directive

Note:

~~Issuance of this procedure will trigger a capacity **Performance Assessment Interval (PAI)** as detailed in *PJM Manual 18, PJM Capacity Market*.~~

Load shed directives need to be issued on a RTO or a Reserve Sub-zone to trigger a capacity **Performance Assessment Interval (PAI)** as detailed in PJM Manual 18, PJM Capacity Market. Issuance of a local load shed directive on an individual basis will not trigger a Performance Assessment Interval (PAI).

- Attachment E: Manual Load Dump Allocation Tables
- Annual update of table
- Added note for recent EOP-011-4 Emergency Operations Standard update

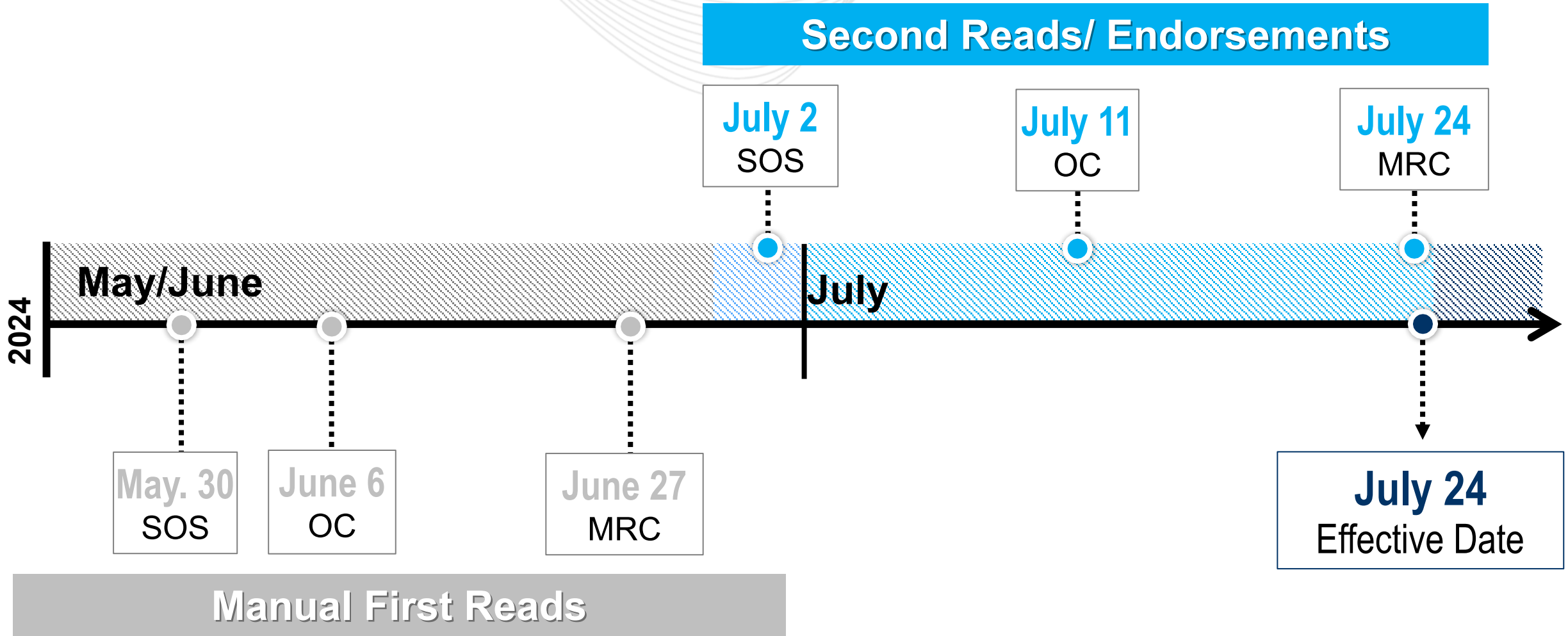
In accordance with NERC Reliability Standard EOP-011-4 R7, PJM as the Transmission Operator, has identified in PJM M13 Emergency Operations, Attachment E: Manual Load Dump Allocation Tables, Attachment F: PJM Manual Load Dump Capability, and PJM M36 System Restoration, Attachment H: Under Frequency Load Shed (UFLS) Tables, the Distribution Providers, UFLS-Only Distribution Providers and Transmission Owners, as entities that are required to assist with the mitigation of operating Emergencies in its Transmission Operator Area through operator-controlled manual Load shedding, undervoltage Load shedding, or underfrequency Load shedding

- Attachment F: PJM Manual Load Dump Capability
 - Annual update of table
 - Added note for recent EOP-011-4 Emergency Operations Standard update

In accordance with NERC Reliability Standard EOP-011-4 R7, PJM as the Transmission Operator, has identified in PJM M13 Emergency Operations, Attachment E: Manual Load Dump Allocation Tables, Attachment F: PJM Manual Load Dump Capability, and PJM M36 System Restoration, Attachment H: Under Frequency Load Shed (UFLS) Tables, the Distribution Providers, UFLS-Only Distribution Providers and Transmission Owners, as entities that are required to assist with the mitigation of operating Emergencies in its Transmission Operator Area through operator-controlled manual Load shedding, undervoltage Load shedding, or underfrequency Load shedding

- Grammatical Updates

- Updated manual owner from Donnie Bielak to Kevin Hatch
- Updated BA in section 1.3
- Grammatical correction in section 3.4
- Removed blank note in section 6.4
- Added hour format in Attachment J



Presenter/SME:
Kevin Hatch
Kevin.Hatch@pjm.com

Facilitator:
Matthew Wharton,
Matthew.Wharton@pjm.com

M-13 Version 93 Revisions



Member Hotline

(610) 666 – 8980

(866) 400 – 8980

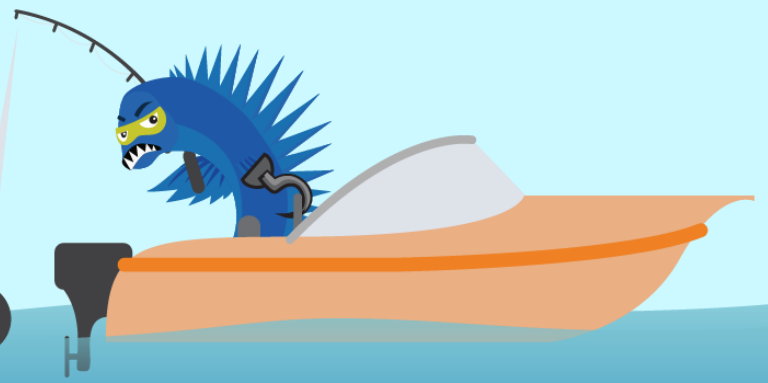
custsvc@pjm.com

**PROTECT THE
POWER GRID**

**THINK BEFORE
YOU CLICK!**



**BE ALERT TO
MALICIOUS PHISHING
EMAILS**



**Report suspicious email activity to PJM.
Call (610) 666-2244 or email it_ops_ctr_shift@pjm.com**